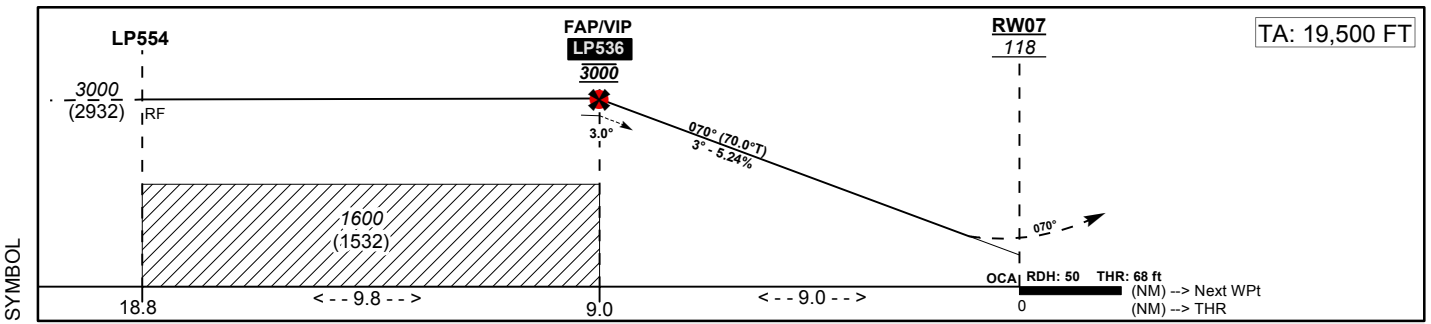
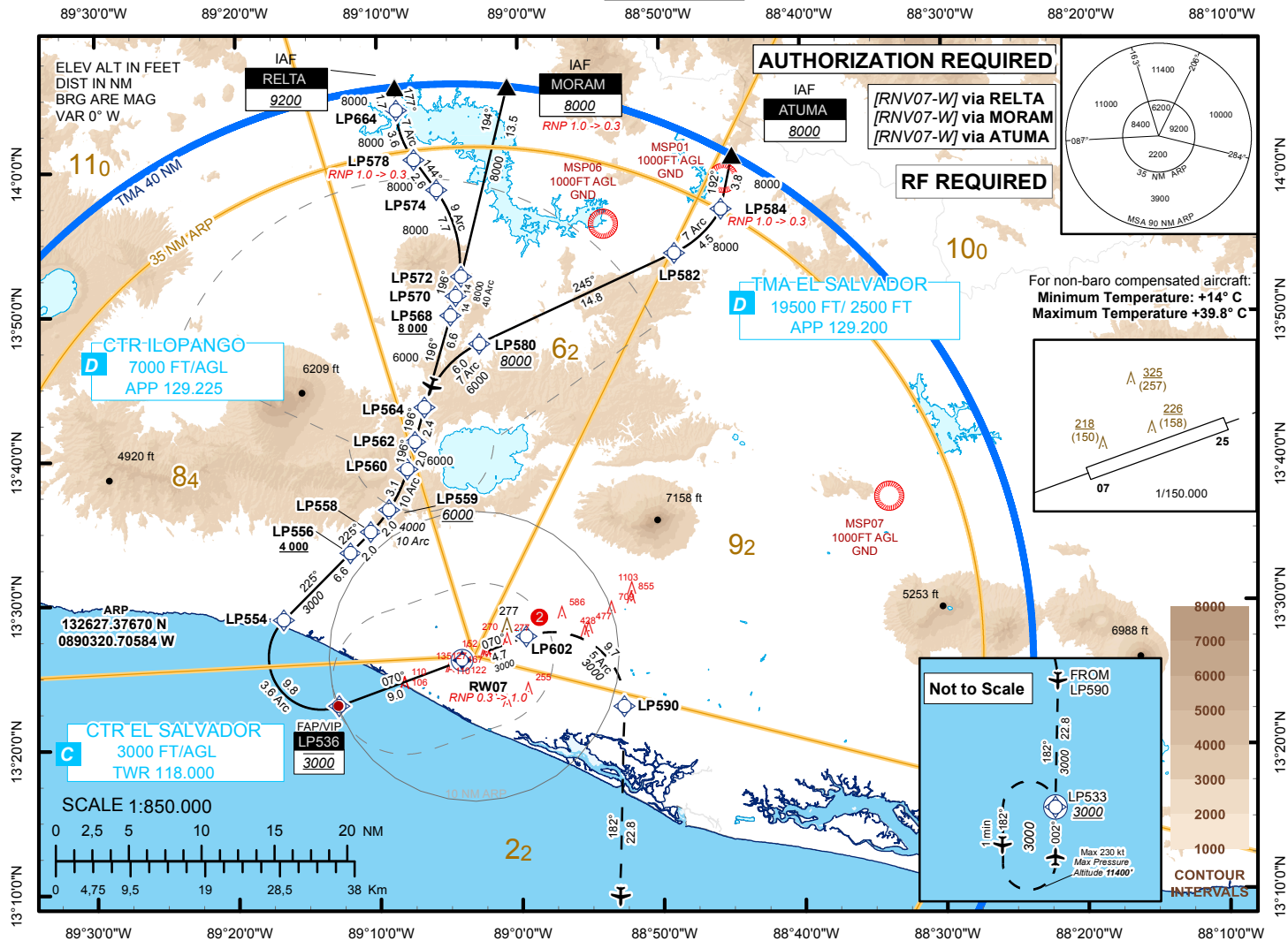


INSTRUMENT
APPROACH
CHART

AERODROME ELEV 101 ft
HEIGHTS RELATED TO
THR RWY 07 ELEV 68 ft

ATIS 127.600
APP 129.200
TWR 118.000

EL SALVADOR / EL SALVADOR INTL
SAN OSCAR ARNULFO ROMERO Y GALDAMEZ
RNP W RWY 07 (AR)



CAT	MA Climb Gradient: 2.5% 152 FT/NM				MISSED APPROACH			
	RNP AR FINAL 0.3				1. Climb to 3000 via the RNAV (RNP) missed approach track to LP533. 2. At LP533 hold or start a new approach via LP533, expect ATC instructions. 3. RNP 0.3 is required until LP602.			
	MARNP 1.0		MARNP 0.3		CAT	Ceiling	Visibility	ALS OUT
	OCA (H)	DA (H)	OCA (H)	DA (H)				Ceiling - Visibility
A	369' (301')	370' (302')	348' (280')	350' (282')	A	300'	800m	300' - 1600m
B	391' (323')	400' (332')	360' (292')	360' (292')	B	300'	800m	300' - 1600m
C	409' (341')	410' (342')	368' (300')	370' (302')	C	300'	800m	300' - 1600m
D	428' (360')	430' (362')	379' (311')	380' (312')	D	300'	1600m	300' - 1600m